

OLD MARSH GOLF CLUB

SHEET 10 APRIL, 1987

71

SEE SHEET 14 of 14

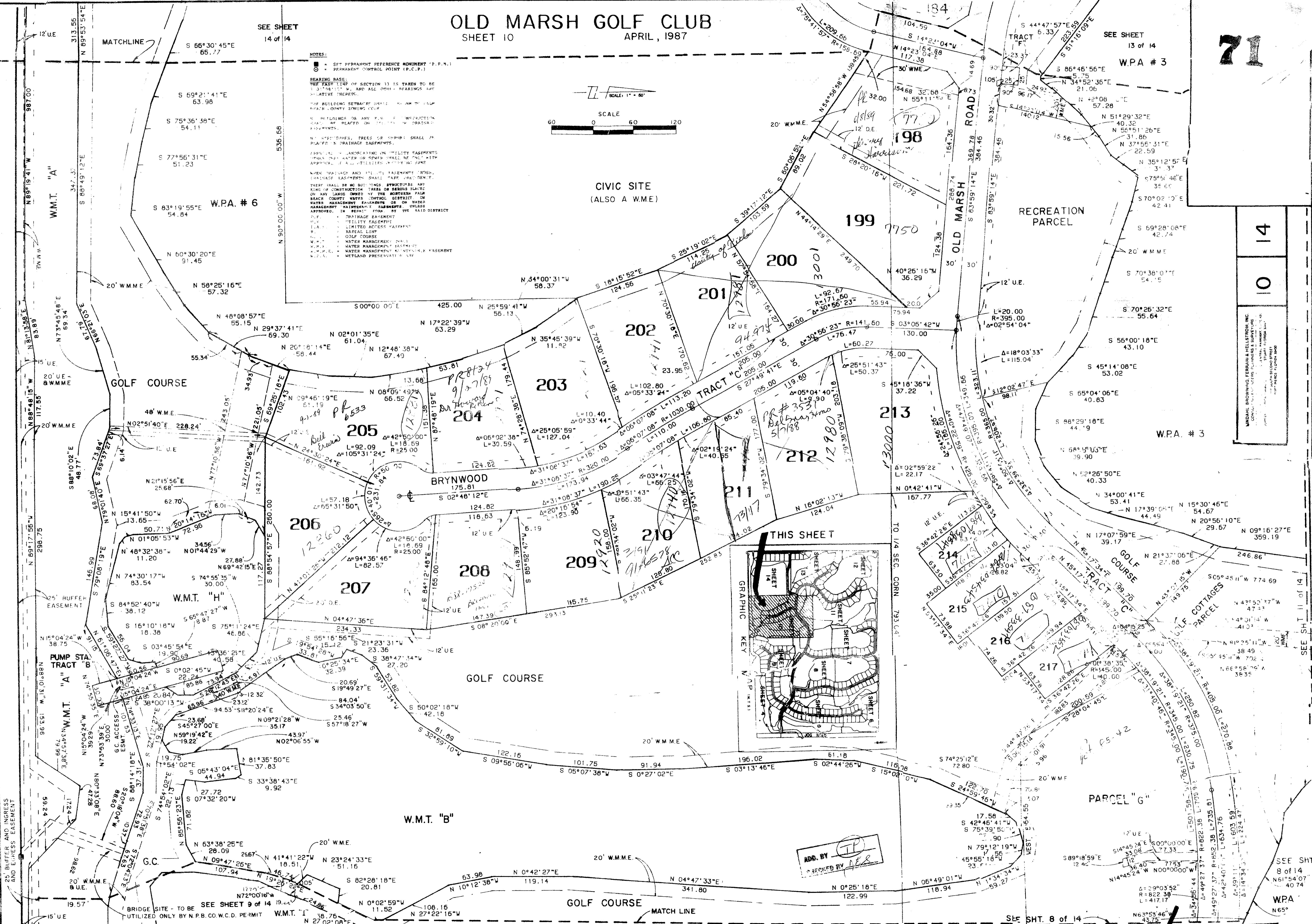
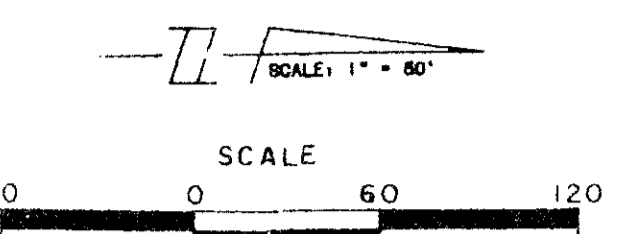
SEE SHEET 13 of 14
W.P.A. # 3

NOTES:

- SEE APPROPRIATE REFERENCE MONUMENT (P.P.M.)
- PERMANENT CONTROL POINT (P.C.P.)

BEARING BASE:
THE FACED LINE OF SECTION 13 IS TAKEN TO BE S 31°38'18"W AND ALL OTHER BEARINGS ARE RELATIVE THEREBY.

ALL BUILDINGS SETBACKS SHALL BE IN ACCORDANCE WITH THE ZONING ORDINANCE.
ALL BUILDINGS OR ANY PART THEREOF SHALL BE PLACED ON THE LOTS IN ACCORDANCE WITH THE ZONING ORDINANCE.
NO STRUCTURES, TREES OR SHRUBS SHALL BE PLANTED IN DRAINAGE BASINS.
APPROPRIATE LANDSCAPING IN UTILITY EASEMENTS SHALL BE DONE TO RESTORE THE ORIGINAL APPEARANCE.
WHEN STRUCTURE AND UTILITY EASEMENTS CROSS, DRAINAGE BASINS SHALL TAKE PRECEDENCE.
THERE SHALL BE NO BUILDINGS, STRUCTURES OR KIND OF CONSTRUCTION, TREES OR SHRUBS PLANTED OR ANY LAND OWNED BY THE GOLF COURSE WHICH MAY BE PLACED ON OR WITHIN THE UTILITY EASEMENTS OR ON ANY MANAGEMENT MAINTENANCE BASINS UNLESS APPROVED IN WRITING BY THE SAID DISTRICT OFFICER.
D.P. DRAINAGE EASEMENT
U.P. UTILITY EASEMENT
L.P. LIMITED ACCESS EASEMENT
R.L. RAILROAD EASEMENT
K.E. KEMP COURSE
W.M. WATER MANAGEMENT
M.P. MANAGED MAINTENANCE
W.P. WATER PREVENTION
M.P. WETLAND PRESERVATION



TAZ 797 280 534/142
 W.M.T. # 1153
 RE 3548
 PUD
 SEE SHEET 11 OF 14

ADD BY [signature]
RECORDED BY [signature]

W.P.A. # 3
 14
 10

OLD MARSH GOLF CLUB 58/71

SEE SHEET 8 of 14
W.P.A. # 3